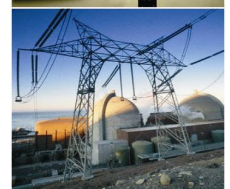
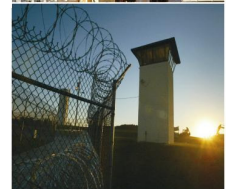


# DNA4016 SAN/NAS IP Appliance Storage Embedded Linux OS 16 HDD



## DESCRIPTION

The DNA4016 Series is a LINUX OS based, Enterprise SAN/NAS IP Appliance Storage, Access and Playback System with 16 HDDs. Units are compatible with Dante DLA Series DVRs and DNA Series H.264/MPEG4 IP and MP IP Cameras. Features include dual Core 64 bit CPU, 2GB Memory (expandable), RAID0, Raid1, Raid5 HDD modes, two (2) 10/100/1000Mbps RJ-45 ports, WEB GUI, hot swappable HDDs, dual Fans and 750W Power Supplies. With expansion capability for additional devices, powerful performance in video access, recording, transmission and playback, the DNA4016 Series are advanced storage solutions for commercial and industrial, IP video surveillance installations.



## FEATURES

- \* LINUX Embedded OS, Enterprise SAN/NAS, IP Video Storage Appliance with Web GUI
- \* High Performance Dual Core 64 bit Processor
- \* Powerful performance in Access, Recording, Transmission over Network and Playback
- \* Supports DLA DVRs and DNA IP Cameras
- \* RAID 0, Raid 1, Raid 5 HDD Modes
- \* 16 hot swappable SATA II HDDs; up to 32TB
- \* Supports 3Gbps Mini SAS storage expansion
- \* 32ch @1080p, 64ch @720p, 128ch @D1 Video Access and Recording capability
- \* 16ch @1080p, 64ch @D1 Transmission
- \* 8ch @1080p, 32ch @D1 Playback
- \* Supports Central Management Platform and Distributed Deployment
- \* Dual 10/100/1000Mbps RJ45 Ethernet Ports
- \* Network functions: HTTP, TCP/IP, UDP, RTSP
- \* Web Configuration and Client Software
- \* Redundant, Ball bearing Cooling Fans
- \* 750W Power Supply, 100-240VAC
- \* Compliance with CE, FCC and ROHS

## APPLICATIONS

- \* Homeland Security
- \* Correctional Centers
- \* Petrochemical Industry
- \* Corporate and Banking
- \* Casinos and Hospitality
- \* Health Care Centers
- \* Schools and Universities
- \* Government and Military
- \* Power Generating Plants
- \* Traffic Surveillance (ITS)

## ORDERING INFORMATION

DNA4016AS SAN/NAS IP Appliance Storage System with 16 HDD Slots and Power Supply

### Electro-Mechanical Specifications

Processor:	Dual Core 64 Bit CPU
Memory:	2GB Expandable
Operating System:	Embedded Linux
Dimension (H x D X W):	133 x 450x 650mm 5.25"(3U) x 25.6" 17.7" (19" w/rackmount ears)
Weight:	Net 74 lbs. (33 Kg) (with HDDs)
Cooling Fans:	Dual, Ball Bearing Type, MTBF >100,000 hours
Power Supply:	100-240VAC, 50/60Hz, 500W (with HDDs)
Operating Temperature:	5C to 40C



[www.dantesecurity.net](http://www.dantesecurity.net)

[sales@dantesecurity.net](mailto:sales@dantesecurity.net)