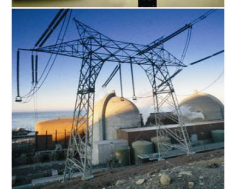
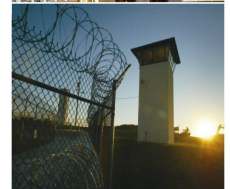


# DNA3800 IP 4K Video Linux OS NVR Appliance 8 HDD; Redundant PS 64 and 128 Inputs



## DESCRIPTION

The DNA3800 Series is a LINUX OS based, Enterprise IP Management and Network Video Recording (NVR) Appliance System with 64, 128 IP Camera inputs and 12MP view/record resolution. Compatible with Dante DNA Series H.264/MPEG4 IP and MP IP Cameras, 128 users may access and view system. Features include dual Core CPU, 2x HDMI ports, 8 HDD or 6 HDD and built-in CD/DVD-RW, Raid 0/1/5/6/10/50/60, Motion Detection, Audio in/out, 16 Alarms in/6 Relays out, RS-232, RS-485 Data, Electronic Mapping, 4 USB, 1 eSATA, 2 x 1000Mbps RJ-45 load balancing ports. With outstanding performance/cost benefits ratio, optional 2 power supplies and N+M hot standby, NVR Management Server, Client, Web, Smart Phone Interface Software and ONVIF compliance, the DNA3800 Series are advanced solutions for commercial and industrial, IP video surveillance installations.



## FEATURES

- \* LINUX OS Enterprise IP NVR Appliance  
DVR like GUI, Failover hot Standby M+N
- \* High Performance Dual Core Microprocessor
- \* H.264/MPEG4 Decoding, up to 3MP Display
- \* 64 / 128 IP inputs; up to 12MP Resolution
- \* 2 x HDMI(up to 3840x2160) and VGA Ports
- \* 8 HDD or 6HDD and built-in CD/DVD-RW
- \* Recording Modes including Manual, Alarm, Schedule, Motion Detection, Video Loss
- \* Max Record 384 Mbps; 4K(4000x3000)
- \* 128 access Users; Raid 0/1/5/6/10/50/60
- \* Smart Phone: iPhone, Android, Windows
- \* Integrated, Multi-layered Facility Maps
- \* Advanced Search and Playback functions
- \* RS-232 (Keyboard);RS-485 PTZ Controls
- \* 2x1000Mbps RJ-45 Ports - Load balancing
- \* Audio in/out; 4 USB, 1 eSATA USB Ports
- \* 16 Alarms In/6 Out; Redundant PS (opt.)
- \* Compliance with CE, FCC, ROHS, ONVIF

## APPLICATIONS

- \* Homeland Security
- \* Correctional Centers
- \* Petrochemical Industry
- \* Corporate and Banking
- \* Casinos and Hospitality
- \* Health Care Centers
- \* Schools and Universities
- \* Government and Military
- \* Power Generating Plants

## ORDERING INFORMATION

DNA3800-64R NVR Appliance 64 IP 4K Video inputs; Audio, Alarms, 2xHDMI, 2x1000Mbps RJ-45  
 DNA3800-128 NVR Appliance 128 IP 4K Video inputs, Audio, Alarms, 2xHDMI, 2x1000Mbps RJ-45  
 DNA3800-64W NVR Appliance 64 IP 4K Video inputs, Audio, Alarms, 2xHDMI, 2x1000Mbps RJ-45

W = CD/DVD-RW; R=Redundant Power Supplies

## Mechanical, Electrical Specifications

Dimension (H x W X D): 90mmx485mmx460mm 3.5"(2U) x 17.3" x 18" (19" w/rackmount ears)  
 Weight not including H/D: Net 20.5 lbs. (9 Kg) - no HDD  
 Power Supply: 100-240VAC, 50/60Hz, 40W - no HDD

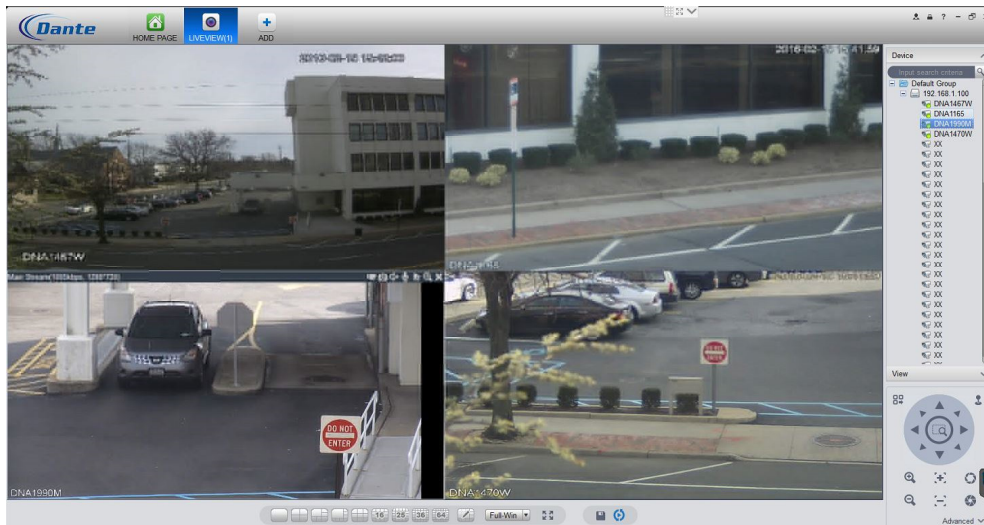


[www.dantesecurity.net](http://www.dantesecurity.net)

Lynbrook, NY USA

[sales@dantesecurity.net](mailto:sales@dantesecurity.net)

# DNA3800 IP 4K Video Linux OS NVR Appliance 8 HDD; Redundant PS 64 and 128 Inputs



## FEATURES OF CLIENT SOFTWARE PSS

- \* Multi-Screen, Friendly, Graphic User Interface (GUI) Client software for up to 128 Users
- \* Manage multiple Digital Video Recorders, Network Video Recorders and Devices
- \* Features Status and Health Report log files of Devices
- \* Connects to 12MP, 8MP, 5MP, 3MP, 2MP, 1.3MP IP Cameras, ONVIF 3rd Party; IP Encoders, Decoders
- \* Supports Smart Phone and Appliances: iPhone, iPad, Android, Windows
- \* Features Management, Configuration, Reboot, **Failover hot Standby M+N**
- \* Supports Admin and Multiple Users with Login and Passwords and Individual Users Configurations
- \* Features Video display Split as: first screen up to 36ch; second screen up to 16ch
- \* Device management such as add, delete, bidirectional talk, video monitoring project, layout config.
- \* Supports configuration of PTZ, bidirectional talk, camera settings, color adjustments
- \* PTZ controls with Direction, Pan, Tilt, Zoom, Focus, Iris, Presets, Tours, Patterns
- \* Supports Live Monitoring from Snapshot and Local Record
- \* Supports Video Search and Playback from Local PC, DVRs, NVRs, or Storage Devices
- \* Supports Video overlay as Camera Title, Time and Video Loss
- \* Supports multiple scheduled methods to realize auto PC guard
- \* Supports Recording 384Mbps; playback 128Mbps in Raid5 mode; Digital Zoom of Recorded Video;
- \* Supports Camera Blank based on Time of Day, Alarms, Auto Notification, Scheduled Action
- \* Connects to Decoders for Videowall and Virtual Matrix Displays
- \* Supports various types of Alarms including External, 396 Motion Detection Zones, Video Loss, Camera Masking, based on Time of Day, Date with Auto Notification and Scheduled action
- \* Features Warning Sound or Message from Alarms
- \* Features exporting the Alarm information to peripheral Devices for Extended Uses
- \* Supports e-map for End User to view all device locations
- \* Features unlimited number of Map Groups and 64 sub-map Layouts with JPEG and BMP

## ENVIRONMENT

- \* OS - Windows 2003/ Windows 7 / 8/ DirectX 9.0 or higher
- \* Client CPU requirement - 2.4GHz or higher; Memory 8GB or higher; Video Memory 1GB
- \* Resolution Display 1024 x 768 or higher (best with 1920x1080 - 1080p)

