

DNA1792T600M24

Thermal Vision 640pixel

2MP IP PTZ Dome 40X

Analytics



DESCRIPTION

The DNA1792T600M24 Series are Hybrid Thermal and 2MP Network IP PTZ Domes with 40X Optical, 24x Digital Zoom that represent state-of-the art, DSP based camera technology. Units are designed with 4th GEN uncooled VOX 640 pixel array image core, 100mm lens (thermal) and NTSC/PAL video outputs(visible); H.264/MJPEG video compression and configurable dual stream output 25/30fps @ 1920x1080. The Series DNA1792T600M24 needs no active illumination; detects a man-sized threat at 3Km and vehicles at up to 9Km in total darkness. Features are: pan/tilts, enclosures, telemetry receiver drivers into compact and rugged systems, Tracking and built-in analytics (IVS). Included are 300 presets, OSD menu with functions, 5 Auto Scan, 5 Patterns, 8 Tours, 24 privacy zones, 24x digital Zoom and 14 color palettes on thermal. With 24VAC voltage, RJ-45 Ethernet port, RS-485 Data, Audio in/out, 7 Alarms input/2 out, micro SD Card, Smart Phone Interface, ONVIF, IP66, the DNA1792T600M24 series Thermal/IP PTZ Integrated Positioning System with built-in Analytics are designed to meet the most demanding, commercial and industrial Network Video surveillance installations.

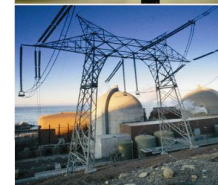
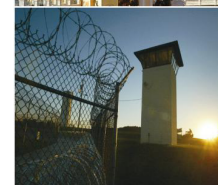
FEATURES

- * Thermal IP 2.0MP PTZ Dome with 40x Optical Zoom
- * Uncooled 4th GEN Thermal Image VOX Core
- * High Performance 640 x 360 or 512 Pixel Resolution
- * 1/1.8" CMOS Progressive Scan Sensor 1944x1092
- * H.264/MJPEG, configurable Dual Stream Encoder
- * 25/30fps @ 1920 x 1080; 60fps @720p Resolutions
- * Illumination Color 0.05/0.005Lux/F1.6/ 0 Lux IR On
- * High Quality 100mm Fixed Lens on Thermal cam
- * Detection(100mm): People - 3000m; Vehicles - 9Km
- * Recogn.(100mm): People - 750m; Vehicles - 2300m
- * ID(100mm): People - 400m; Vehicles - 1200m
- * Built-in Analytics: Tripwire, Perimeter protection, loitering, abandoned objects, missing objects
- * 10/100 Mbps Ethernet Compatible; RJ-45 LAN Port
- * 300 Presets, 8-24 Privacy Masking Zones
- * Programmable 5 Auto Scan, 5 Patterns; 8 Tours
- * 7 Alarms in, 2 Alarms out, Audio in/out
- * Smart Phone Interface: iPhone, Android, Windows
- * Die Cast Aluminum Housing, Sunshield, Wiper
- * 24 VAC input Voltage, 50Hz/60Hz, POE
- * Ethernet/Power Surge Protection; SD Card (128GB)
- * Compliance CE, FCC, ROHS, ONVIF, IP66

ORDERING INFORMATION

DNA1792T6100M24A3CA5 Thermal/IP PTZ Dome, 640 Pixel, 100mm Lens, 40x, NTSC out, 24VAC

DNA1792T6100M24B3CA5 Thermal/IP PTZ Dome, 640 Pixel, 100mm Lens, 40x, PAL out, 24VAC



APPLICATIONS

- * Homeland Security
- * Correctional Centers
- * Petrochemical Industry
- * Corporate and Banking
- * Casinos and Hospitality
- * Health Care Centers
- * Schools and Universities
- * Government and Military
- * Power Generating Plants
- * Traffic Surveillance (ITS)



DNA1792T600M24

Thermal Vision 640pixel 2MP IP PTZ Dome 40X Analytics



Video Specifications

Video Output: IP, Analog NTSC/PAL
Camera ID range: 1-300

Audio Specifications

Audio Input/Output: 1 / 1
Audio Compression: G.711a

Data Specifications

LAN Interface: 10/100Mbps Ethernet RJ-45
PTZ Data: RS-485
Baud Rate/Protocol: 2400, Pelco D

General Parameters

Auto Pan: 0°~360°, 5 auto scan routes
Programmable Presets: 300 with titles
Tours/Patterns/Scans: 8 / 5 / 5
Privacy Masking Zones: 24
Alarm Inputs/Outputs: 7 / 2

Electrical Parameters

Input Voltage/ Cons.: 24VAC / 70W

Mechanical Parameters

Materials: Die Cast Aluminum w/Sunshield
Manual Pan Speed: 0.1° ~ 160°/sec/max
Manual Tilt Speed: 0.1° ~ 60° /sec/max
Preset Speed: 160° /sec Pan; 60° /sec Tilt
Rotation travel: Pan 360° continuous
Tilt Travel: -45° ~ 90°
Motor: Stepping type
Fan and heater: Continuous fan; auto-start heater
Dimensions D x H x W: 14.2"(360mm), 18"(460mm)
10"(250mm)
Weight: 40lbs(18Kg)

Environmental Parameters

Oper. Temperature Outdoor: -40°F~158°F(-40°C~70°C)
Humidity: 0~90% (Non-condensing)

Regulatory Compliance

Agencies: CE, FCC, ROHS, ONVIF, IP66
Manufactured to: ISO9000

DNA1792T600M24	Thermal Camera Parameters
Image Detector Type:	4th Generation uncooled VOX Microbolometer
Sensor Format / Pixel Pitch:	640 x 360(NTSC); 640 x 512(PAL) / 17 Microns
Fixed Lens:	Highest Quality 100mm
Angle of View:	42°H x 1.1°V
Spectral Response/Sensitivity:	7.5um to 14um / < 40mK NETD @ F1.0
Video Format/Output:	IP / HD-TVI or Analog
Performance 100mm lens:	Detection: people - 3Km; vehicles 9Km
Performance 100mm lens:	Recognition vehicles: 750m; vehicles - 2300m
Performance 100mm lens:	Identification vehicles: 400m; vehicles - 1200m
Color Palettes:	14 (White hot/Black hot/Iron row/Ice fire/Fusion/Rainbow/Glo bow/more...)
	2MP IP Camera Parameters
Image Sensor	Progressive Scan 1/3" Exmor CMOS true WDR(120dB)
Effective Pixels / Output Pixels	2.0M (1944 x 1092) / 1920(H)x1080(V); 1080P / 720P resolutions
Min. Illum. F1.6, 50 IRE:	0.005Lux/ICR Off, 0.0005Lux/ICR On
Frame Rate:	1080P/720P(1~30fps); D1(1~30fps)
Optical / Digital Zoom (Visible):	40X (F=7.9mm ~ 316mm) / 24X
View Angle: Wide x Tele; F. Value	41.5°(Wide) ~ 1.1°(Tele) / F 1.6 (wide) – F6.1 (telephoto)
Focus:	Auto/Manual (Far/Near)
Privacy Masking:	ON/OFF (up to 24 areas)
Noise Reduction:	Ultra DNR (2D/3D)
Gain Control:	Auto / Manual
Back Light Compensation:	BLC / HLC / WDR
White Balance:	Auto, ATW, Indoor, Outdoor, Auto
	Encoder/Parameters
Video Compression:	H.264/MJPEG, Dual Stream, Configurable
Network Protocol:	IPv4/IPv6, HTTP, HTTPS, SSL, TCP/IP, UDP, UPnP, ICMP, IGMP, SNMP, RTSP, RTP, SMTP, NTP, DHCP, DNS, PPPOE, DDNS, FTP, IP Filter, QoS, Bonjour
Operating System:	Compatible with DNA3700, DNA3750, DNA3800, DNA4000, DNA5000 Series NVR Appliances (embedded Linux); WIN 7 / WIN 8 / WIN10 / WIN SERVER
Web Server:	Intuitive Browser Interface, Internet Explorer

